



Echo Heights, London, E4

BUTLER & STAG



With stunning views of King George Reservoir, we are thrilled to present this spacious one bedroom first floor flat, nestled in a peaceful cul-de-sac in the highly sought-after area of North Chingford.



- Newly Refurbished One Bedroom Flat
- Brand New Kitchen
- Purpose Built
- Parking Available
- Stunning Views
- Available Now

This property benefits from a newly refurbished fitted kitchen, spacious bedroom and a family bathroom.



Conveniently located within walking distance of Chingford mainline station (TFL Zone 5), the property offers easy access to London Liverpool Street in just 25 minutes via Walthamstow. Excellent local bus routes provide direct connections to Stratford City, the Olympic Park, and the Westfield shopping centre.

This impressive property is just a short walk from quality local eateries, bars, shops, and amenities. Mansfield Park is just a stone's throw away, and the ancient Epping Forest, London's largest open space, is also within walking distance.

Council Tax Band C



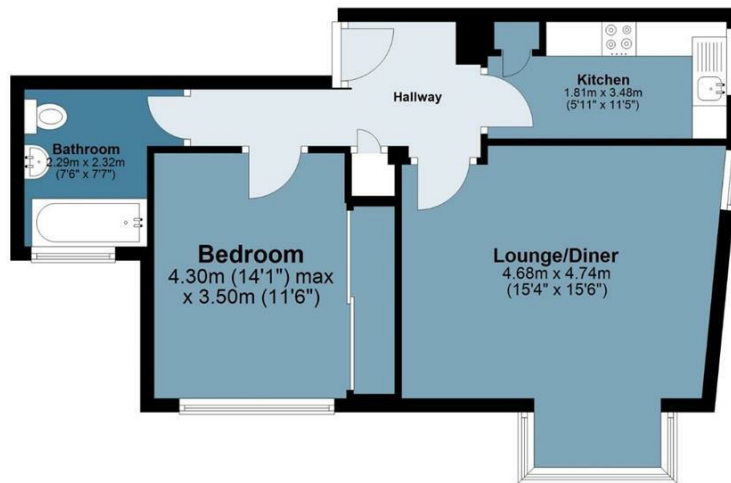
Echo Heights

Approx. Gross Internal Area 48.6 sq. metres (523.6 sq. feet)

BUTLER & STAG

First Floor

Approx. 48.6 sq. metres (523.6 sq. feet)



Measurements are approximate and for illustration purposes only. While we do not doubt the accuracy and completeness, we advise you conduct a careful independent assessment of the property to determine monetary value
© @modephoto.uk www.modephoto.co.uk

IMPORTANT NOTICE - These particulars have been prepared in good faith and they are not intended to constitute part of an offer or contract. We have not performed a structural survey on this property and the services, appliances and specific fittings have not been tested. All photographs, measurements, floor plans and distances referred to are given as a guide and should not be relied upon.

BUTLER & STAG

☎ 020 8504 9000

🏠 184 Queen's Road, Buckhurst Hill, IG9 5BD

✉ buckhursthill@butlerandstag.com

www.butlerandstag.uk